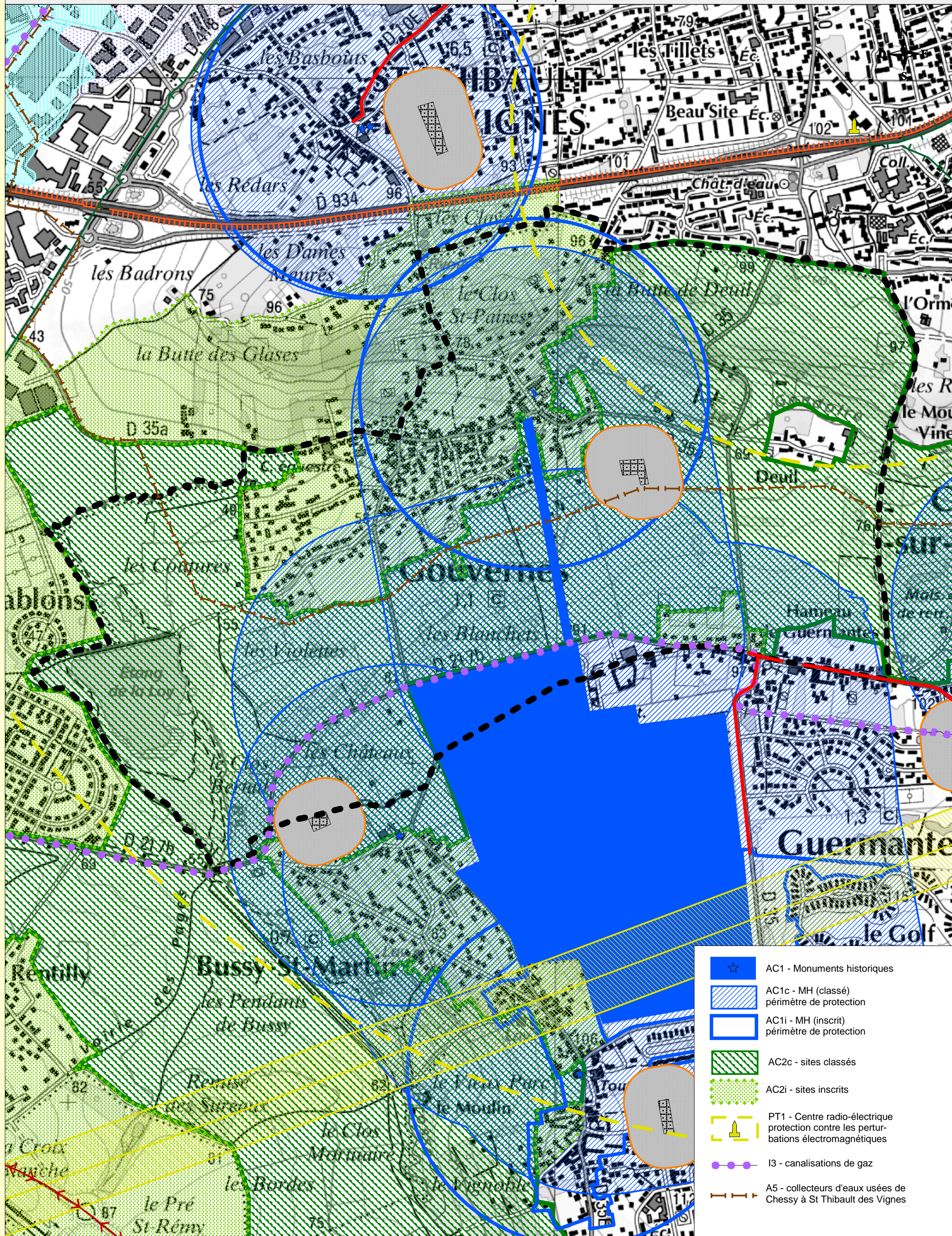





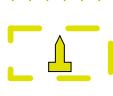
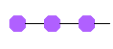



COMMUNE DE GOUVERNES
Servitudes d'utilité publique



-  AC1 - Monuments historiques
-  AC1c - MH (classé) périmètre de protection
-  AC1i - MH (inscrit) périmètre de protection
-  AC2c - sites classés
-  AC2i - sites inscrits
-  PT1 - Centre radio-électrique protection contre les perturbations électromagnétiques
-  I3 - canalisations de gaz
-  A5 - collecteurs d'eaux usées de Chesy à St Thibault des Vignes